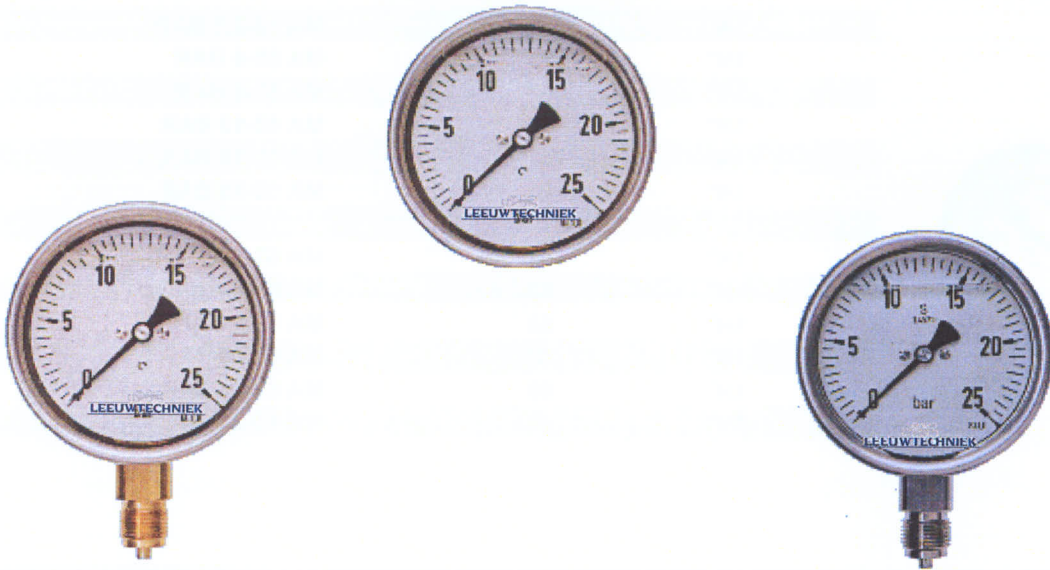





MANOMETERS



Wij kunnen manometers laten bedrukken met uw bedrijfsnaam of logo
Minimale afname per bereik 100 stuks

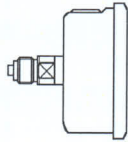
| | | | |
|-------------------------|---|------------|-----------------|
| Bestelvoorbeeld: | 213-OA-250 BAR | | |
| Type: | MA / MO = droog met kunststofkast 213 = glycerine gevuld met RVS kast 233 = glycerine gevuld geheel RVS | | |
| Manometer: | - = 63 mm | Klasse 1,6 | G1/4" standaard |
| | • = 100 MM | Klasse 1,0 | G1/2" standaard |
| | * = 160 mm | Klasse 1,0 | G1/2" standaard |
| Aansluiting: | OA = Onder aansluiting AA = Achter aansluiting | | |
| Drukbereik: | -1/0 Bar t/m 0/1000 Bar | | |

| MA Manometer | Manometer met kunststof kast | | | KG-910 |
|--|------------------------------|-----------------|---------------|--------|
| | Draad (G) | Diameter (D) | Bestel nr. | Prijs |
|   | 1/8"K | 40 | MA 40-2,5 BAR | 12,50 |
| | 1/8"K | 40 | MA 40-4 BAR | 12,50 |
| | 1/8"K | 40 | MA 40-6 BAR | 12,50 |
| | 1/8"K | 40 | MA 40-10 BAR | 12,50 |
| | 1/8"K | 40 | MA 40-16 BAR | 12,50 |
| | 1/8"K | 40 | MA 40-25 BAR | 12,50 |
| | 1/4" | 50 | MA 50-2,5 BAR | 12,50 |
| | 1/4" | 50 | MA 50-4 BAR | 12,50 |
| | 1/4" | 50 | MA 50-6 BAR | 12,50 |
| | 1/4" | 50 | MA 50-10 BAR | 12,50 |
| | 1/4" | 50 | MA 50-16 BAR | 12,50 |
| | 1/4" | 50 | MA 50-25 BAR | 12,50 |
| | 1/4" | 63 | MA 63-2,5 BAR | 12,50 |
| | 1/4" | 63 | MA 63-4 BAR | 12,50 |
| 1/4" | 63 | MA 63-6 BAR | 12,50 | |
| 1/4" | 63 | MA 63-10 BAR | 12,50 | |
| 1/4" | 63 | MA 63-16 BAR | 12,50 | |
| 1/4" | 63 | MA 63-25 BAR | 12,50 | |

| MO Manometer | Manometer met kunststof kast | | | KG-910 |
|---|------------------------------|-----------------|---------------|--------|
| | Draad (G) | Diameter (D) | Bestel nr. | Prijs |
|  | 1/8"K | 40 | MO 40-2,5 BAR | 12,50 |
| | 1/8"K | 40 | MO 40-4 BAR | 12,50 |
| | 1/8"K | 40 | MO 40-6 BAR | 12,50 |
| | 1/8"K | 40 | MO 40-10 BAR | 12,50 |
| | 1/8"K | 40 | MO 40-16 BAR | 12,50 |
| | 1/8"K | 40 | MO 40-25 BAR | 12,50 |
| | 1/4" | 50 | MO 50-2,5 BAR | 12,50 |
| | 1/4" | 50 | MO 50-4 BAR | 12,50 |
| | 1/4" | 50 | MO 50-6 BAR | 12,50 |
| | 1/4" | 50 | MO 50-10 BAR | 12,50 |
| | 1/4" | 50 | MO 50-16 BAR | 12,50 |
| | 1/4" | 50 | MO 50-25 BAR | 12,50 |
| | 1/4" | 63 | MO 63-2,5 BAR | 12,50 |
| | 1/4" | 63 | MO 63-4 BAR | 12,50 |
| | 1/4" | 63 | MO 63-6 BAR | 12,50 |
| | 1/4" | 63 | MO 63-10 BAR | 12,50 |
| | 1/4" | 63 | MO 63-16 BAR | 12,50 |
| | 1/4" | 63 | MO 63-25 BAR | 12,50 |



| 213-AA Manometer | Glycerine Manometer met RVS kast | | | KG-910 |
|---------------------|----------------------------------|-----------------|-------------------|--------|
| | Draad (G) | Diameter (D) | Bestel nr. | Prijs |
| | 1/4" | 63 | 213-AA/ -1/0 BAR | 26,50 |
| | 1/4" | 63 | 213-AA/ -1/+3 BAR | 26,50 |
| | 1/4" | 63 | 213-AA/ -1/+5 BAR | 26,50 |
| | 1/4" | 63 | 213-AA- 0,6 BAR | 26,50 |
| | 1/4" | 63 | 213-AA- 1 BAR | 26,50 |
| | 1/4" | 63 | 213-AA- 1,6 BAR | 26,50 |
| | 1/4" | 63 | 213-AA- 2,5 BAR | 26,50 |
| | 1/4" | 63 | 213-AA- 4 BAR | 26,50 |
| | 1/4" | 63 | 213-AA- 6 BAR | 26,50 |
| | 1/4" | 63 | 213-AA- 10 BAR | 26,50 |
| | 1/4" | 63 | 213-AA- 16 BAR | 26,50 |
| | 1/4" | 63 | 213-AA- 25 BAR | 26,50 |
| | 1/4" | 63 | 213-AA- 40 BAR | 26,50 |
| | 1/4" | 63 | 213-AA- 60 BAR | 26,50 |
| | 1/4" | 63 | 213-AA- 100 BAR | 26,50 |
| | 1/4" | 63 | 213-AA- 160 BAR | 26,50 |
| | 1/4" | 63 | 213-AA- 250 BAR | 26,50 |
| | 1/4" | 63 | 213-AA- 400 BAR | 26,50 |
| | 1/4" | 63 | 213-AA- 600 BAR | 50,00 |
| | 1/4" | 63 | 213-AA- 1000 BAR | 50,00 |



| 213-OA Manometer | Glycerine Manometer met RVS kast | | | KG-910 |
|---------------------|----------------------------------|-----------------|-------------------|--------|
| | Draad (G) | Diameter (D) | Bestel nr. | Prijs |
| | 1/4" | 63 | 213-OA/ -1/0 BAR | 26,50 |
| | 1/4" | 63 | 213-OA/ -1/+3 BAR | 26,50 |
| | 1/4" | 63 | 213-OA/ -1/+5 BAR | 26,50 |
| | 1/4" | 63 | 213-OA- 0,6 BAR | 26,50 |
| | 1/4" | 63 | 213-OA- 1 BAR | 26,50 |
| | 1/4" | 63 | 213-OA- 1,6 BAR | 26,50 |
| | 1/4" | 63 | 213-OA- 2,5 BAR | 26,50 |
| | 1/4" | 63 | 213-OA- 4 BAR | 26,50 |
| | 1/4" | 63 | 213-OA- 6 BAR | 26,50 |
| | 1/4" | 63 | 213-OA- 10 BAR | 26,50 |
| | 1/4" | 63 | 213-OA- 16 BAR | 26,50 |
| | 1/4" | 63 | 213-OA- 25 BAR | 26,50 |
| | 1/4" | 63 | 213-OA- 40 BAR | 26,50 |
| | 1/4" | 63 | 213-OA- 60 BAR | 26,50 |
| | 1/4" | 63 | 213-OA- 100 BAR | 26,50 |
| | 1/4" | 63 | 213-OA- 160 BAR | 26,50 |
| | 1/4" | 63 | 213-OA- 250 BAR | 26,50 |
| | 1/4" | 63 | 213-OA- 400 BAR | 26,50 |
| | 1/4" | 63 | 213-OA- 600 BAR | 50,00 |
| | 1/4" | 63 | 213-OA- 1000 BAR | 50,00 |

