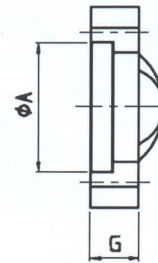
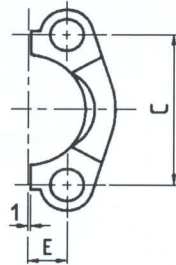




FH

SAE FLENSHELFTEN

KG-260



Afmeting	Afm. (A)	Boutpatroon (C)	(E)	Afm. (G)	Boutafm. (M)	Werkdruk (Bar)	Bestel nr.	Prijs
----------	-------------	--------------------	-----	-------------	-----------------	-------------------	------------	-------

Boutenpatroon 3000 P.S.I.

1/2"	30,96	38,10	8,74	13	M8X25	350	FH 3001 NW13	3,72
3/4"	38,89	47,63	11,13	14	M8X25	350	FH 3001 NW13	4,09
1"	45,24	52,37	13,08	16	M10X30	315	FH 3003 NW25	4,44
1-1/4"	51,59	58,72	15,09	16	M10X35	250	FH 3004 NW32	5,83
1-1/2"	61,09	69,85	17,86	16	M12X35	200	FH 3005 NW40	7,09
2"	72,24	77,77	21,44	16	M12X35	200	FH 3006 NW50	9,64
2-1/2"	84,94	88,90	25,40	19	M12X40	160	FH 3007 NW65	15,59
3"	102,39	106,38	30,96	22	M16X45	160	FH 3008 NW75	23,78
3-1/2"	115,10	120,65	34,92	22	M16X45	35	FH 3009 NW85	39,88
4"	127,79	130,18	38,88	25	M16X50	35	FH 3010 NW100	54,40

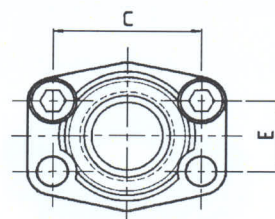
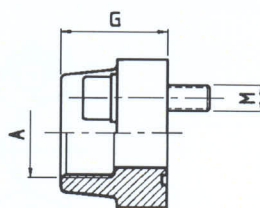
Boutenpatroon 6000 P.S.I.

1/2"	32,54	40,49	9,12	16	M8X30	400	FH 6001 NW13	3,97
3/4"	42,06	50,8	11,91	19	M10X35	400	FH 6002 NW20	4,76
1"	48,41	57,15	13,89	24	M12X45	400	FH 6003 NW25	6,20
1-1/4"	54,76	66,68	15,88	27	M14X50	400	FH 6004 NW32	9,23
1-1/2"	64,29	79,38	18,26	30	M16X55	400	FH 6005 NW40	16,44
2"	80,16	96,82	22,23	37	M20X65	400	FH 6006 NW50	24,10
2-1/2"	108,90	123,80	29,40	45	M24X75	400	FH 6007 NW65	105,64

Exclusief bouten !!

AFS - G**SAE DRAADFLENS vzv BSP-Bi-Dr.**

KG-260



Afmeting	Afm. (A) (BSP)	Boutpatroon (C) (E)	Afm. (G)	Boutafm. (M)	Werkdruk (Bar)	Bestel nr.	Prijs
----------	-------------------	------------------------	-------------	-----------------	-------------------	------------	-------

Boutenpatroon 3000 P.S.I.

1/2"	1/2"	38,10	17,48	36	M 8X30	350	AFS 80G	24,35
3/4"	1/2"	47,63	22,23	36	M10X35	350	AFS 100G 1/2"	30,08
3/4"	3/4"	47,63	22,23	36	M10X35	350	AFS 100G	27,24
1"	1/2"	52,37	26,19	38	M10X35	315	AFS 102G 1/2"	31,65
1"	3/4"	52,37	26,19	38	M10X35	315	AFS 102G 3/4"	31,65
1"	1"	52,37	26,19	38	M10X35	315	AFS 102G	31,65
1-1/4"	1"	58,72	30,18	42	M10X40	250	AFS 104G 1"	42,24
1-1/4"	1-1/4"	58,72	30,18	41	M10X40	250	AFS 104G	38,02
1-1/2"	1-1/4"	69,85	35,71	45	M12X45	200	AFS 106G 1-1/4"	53,07
1-1/2"	1-1/2"	69,85	35,71	45	M12X45	200	AFS 106G	47,88
2"	1-1/2"	77,77	42,88	45	M12X45	200	AFS 108G 1-1/2"	64,10
2"	2"	77,77	42,88	45	M12X45	200	AFS 108G	58,02
2-1/2"	2-1/2"	88,90	50,80	50	M12X45	160	AFS 110G	70,36
3"	3"	106,38	61,93	50	M16X50	138	AFS 112G	88,79
3-1/2"	3-1/2"	120,65	69,85	48	M16X50	35	AFS 114G	122,59
4"	4"	130,18	77,77	48	M16X50	35	AFS 116G	131,75

Boutenpatroon 6000 P.S.I.

1/2"	1/2"	40,49	18,24	36	M8X30	400	AFS 401G	26,36
3/4"	1/2"	50,8	23,8	35	M10X35	400	AFS 402G 1/2"	34,65
3/4"	3/4"	50,80	23,80	35	M10X35	400	AFS 402G	32,10
1"	3/4"	57,15	27,76	42	M12X45	400	AFS 403G 3/4"	43,12
1"	1"	57,15	27,76	42	M12X45	400	AFS 403G	39,25
1-1/4"	1"	66,68	31,75	45	M14X45	400	AFS 404G 1"	57,14
1-1/4"	1-1/4"	66,68	31,75	45	M14x45	400	AFS 404G	52,38
1-1/2"	1-1/4"	79,38	36,5	50	M16X50	400	AFS 405G 1-1/4"	82,99
1-1/2"	1-1/2"	79,38	36,50	50	M16X50	400	AFS 405G	75,40
2"	1-1/2"	96,82	44,45	65	M20X65	400	AFS 406G 1-1/2"	145,58
2"	2"	96,82	44,45	65	M20x65	400	AFS 406G	133,77
2-1/2"	2-1/2"	123,8	58,8	80	M24X80	400	AFS 407G	254,34

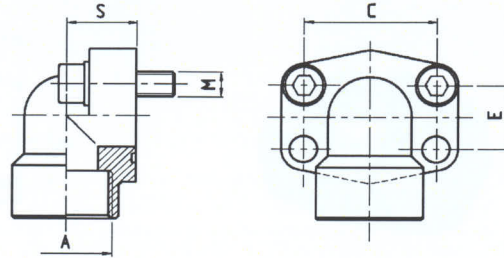
Inclusief bouten en o-ring!!



AFS-G 90GR

SAE DRAADFLENS 90GR vzw BSP-Bi-Dr.

KG-260



Afmeting	Afm. (A) (BSP)	Boutpatroon (C) (E)	Afm. (S)	Boutafm. (M)	Werkdruk (Bar)	Bestel nr.	Prijs
----------	-------------------	------------------------	-------------	-----------------	-------------------	------------	-------

Boutenpatroon 3000 P.S.I.

1/2"	1/2"	38,10 17,48	20	M 8X30	350	AFS 80G 90GR	52,13
3/4"	3/4"	47,63 22,23	24	M10X35	350	AFS 100G 90GR	58,55
1"	1"	52,37 26,19	28	M10X35	315	AFS 102G 90GR	65,86
1-1/4"	1-1/4"	58,72 30,18	34	M10X40	250	AFS 104G 90GR	77,26
1-1/2"	1-1/2"	69,85 35,71	38	M12X45	200	AFS 106G 90GR	99,12
2"	2"	77,77 42,88	42	M12X45	200	AFS 108G 90GR	119,85

Boutenpatroon 6000 P.S.I.

1/2"	1/2"	40,49 18,24	20	M8X30	400	AFS 401G 90GR	56,44
3/4"	3/4"	50,8 23,8	28	M10X35	400	AFS 402G 90GR	65,70
1"	1"	57,15 27,76	34	M12X45	400	AFS 403G 90GR	78,21
1-1/4"	1-1/4"	66,68 31,75	38	M14x50	400	AFS 404G 90GR	102,65
1-1/2"	1-1/2"	79,38 36,50	42	M16X50	400	AFS 405G 90GR	124,60
2"	2"	96,82 44,45	60	M20x110	400	AFS 406G 90GR	368,08

Inclusief bouten en o-ring!!